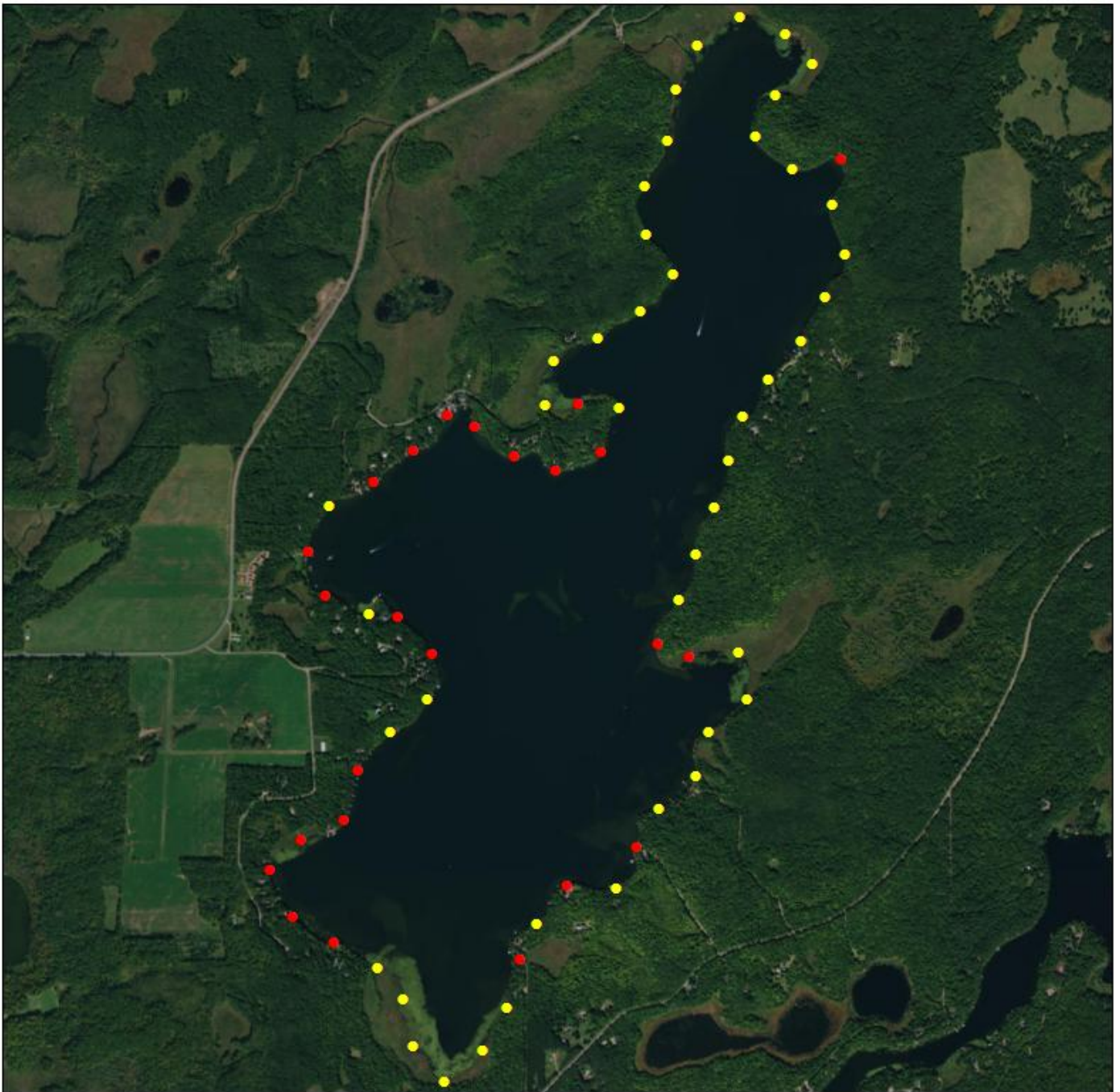


Minnesota Department of Natural Resources
Score the Shore Survey Summary Report
Clearwater Lake (DOW# 18003800) - Survey Date: 6/11/2015

Minnesota DNR EWR Lake Habitat program staff conducted an assessment of lakeshore habitat on Clearwater Lake on 6/11/2015, following the Score the Shore survey protocols. The assessment consisted of 68 survey sites evenly spaced 200 meters around the lake. Assessments were made in three habitat zones: Shoreline Zone (the shore-water interface to the top of the natural bank), Shoreland Zone (land-ward from shoreline to development structure or 100ft), and Aquatic Zone (lake-ward 50ft of shoreline). The average lakewide habitat score was 85.0(+/- 2.1) out of 100 possible. Approximately 35 percent of the sites were developed with a mean score of 68.3(+/- 3.9), while undeveloped sites had a mean score of 94.0(+/- 0.9).

Category	Survey Sites	Shoreland Score (33)	Shoreline Score (33)	Aquatic Score (33)	Mean Score Std Error	Mean Score (100)
Lakewide	68	28.1	28.1	28.7	2.1	85.0
Undeveloped Total	44	32.5	30.6	30.9	0.9	94.0
Undeveloped Nonwetland	35	32.3	31.2	31.4	0.9	95.0
Undeveloped Wetland	9	33.3	28.1	28.9	2.0	90.4
Developed Total	24	20.0	23.6	24.7	3.9	68.3
Boat Access	1	23.3	26.7	33.3	0.0	83.3
Campsite	2	25.8	28.3	31.7	14.2	85.8
Several Single-Family Residential Lots	1	13.3	3.3	23.3	0.0	40.0
Single-Family Residential	20	19.6	24.0	23.7	4.0	67.3

Clearwater Lake Score the Shore Results



0 310 620 930 1,240 Meters

Development

- Developed
- Undeveloped
- No Sample