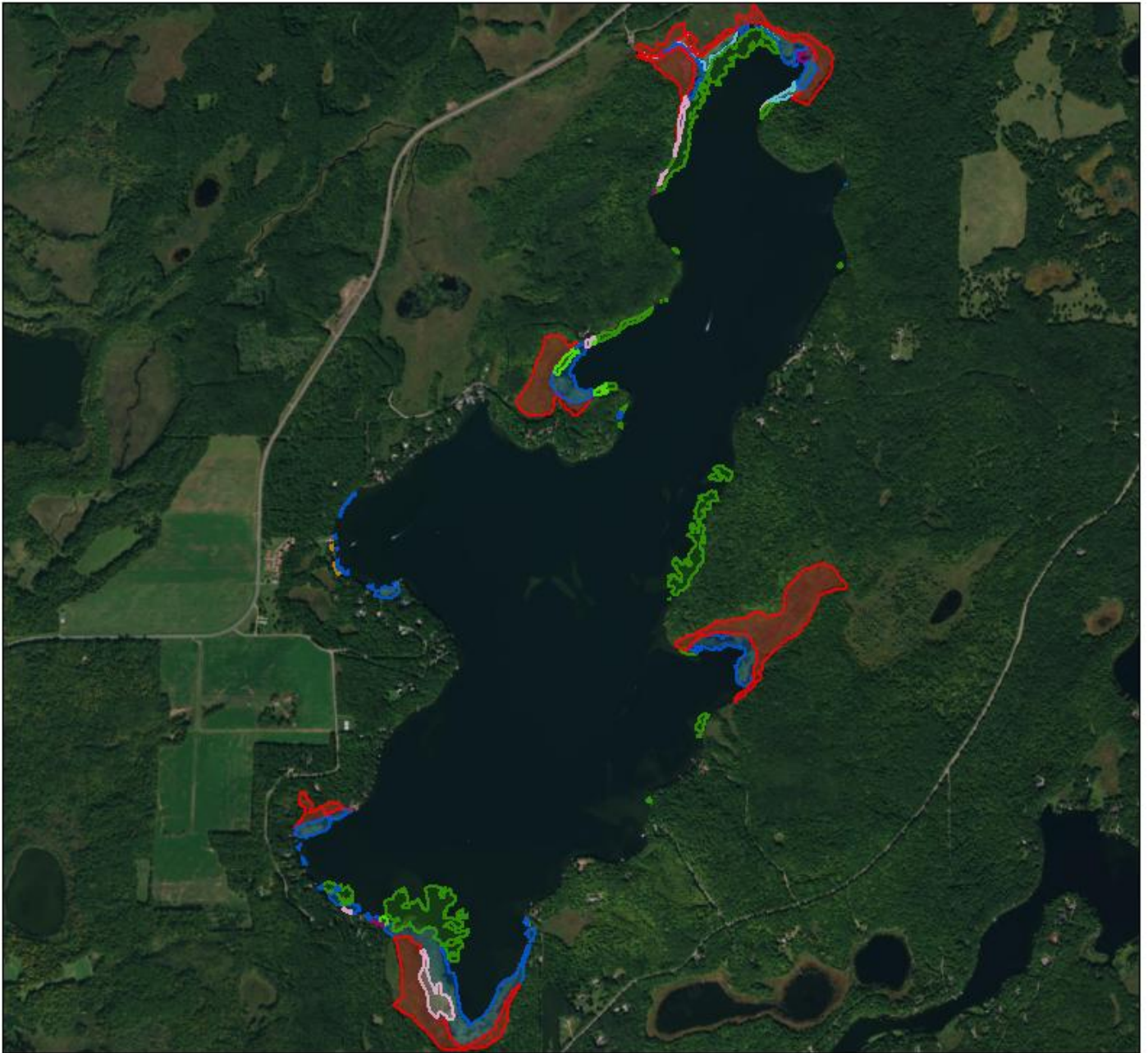


Minnesota Department of Natural Resources
Floating-leaf and Emergent Vegetation Summary Report
Clearwater Lake (DOW# 18003800) - Survey Date: 08/25/2015

Minnesota DNR EWR Lake Habitat program staff delineated the floating leaf and emergent aquatic vegetation of Clearwater lake on 08/25/2015, following the protocols listed in the MN DNR Lake Plant Mapping Manual. There were a total of 132.9 acres of floating and emergent plants mapped. This consisted of 95.3 acres of emergent dominated plant communities and 37.6 acres of floating leaf plant communities. For more information see map and summary table below.

Category	Number of Stands	Total (Acres)	Mean Acres (1 SE)
Combined Total	100	132.9	1.3 (+/-0.3)
Emergent	61	95.3	1.6 (+/-0.4)
Cattail	9	58.4	6.5 (+/-2.1)
Other Emergent	3	0.1	0.0 (+/-0.0)
Rushes	34	29.2	0.9 (+/-0.3)
Rushes and Others	5	1.7	0.3 (+/-0.1)
Wild Rice	3	1.1	0.4 (+/-0.3)
Wild Rice and Others	7	4.8	0.7 (+/-0.4)
Floating	39	37.6	1.0 (+/-0.4)
Waterlilies	35	34.5	1.0 (+/-0.4)
Waterlilies and Others	4	3.1	0.8 (+/-0.4)

Clearwater Lake Floating and Emergent Plants



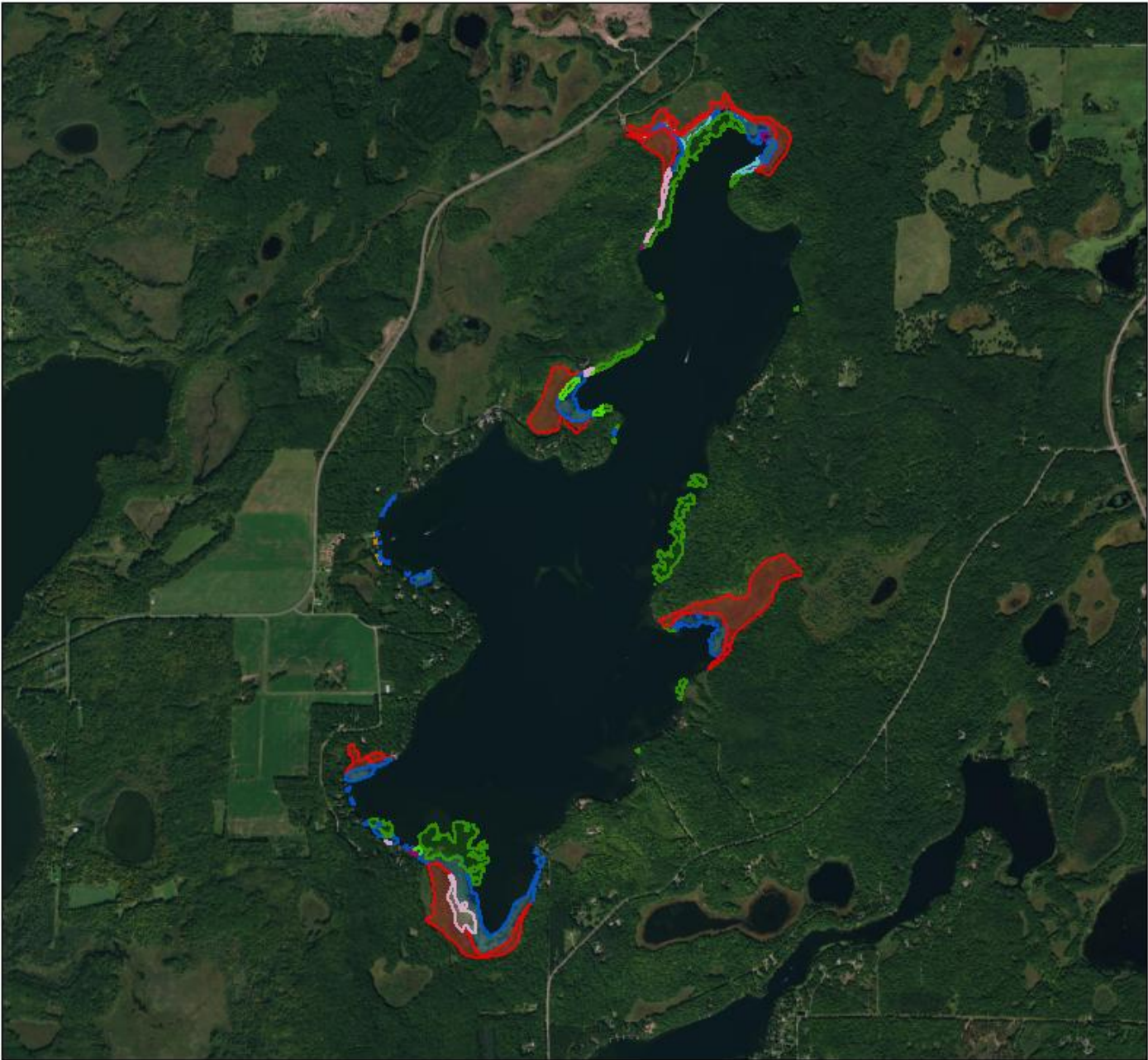
Zoomed to Data Extent

Plant Class

	Wild Rice
	Wild Rice and Other
	Other Emergent
	Cattail
	Ruses
	Ruses and Other
	Waterlilies
	Waterlilies and Other



Clearwater Lake Floating and Emergent Plants



Zoomed to Lake Boundary

Plant Class

-  Rushes
-  Rushes and Other
-  Waterlilies
-  Waterlilies and Other
-  Wild Rice
-  Wild Rice and Other
-  Other Emergent
-  Cattail

